

# AUGUSTA

G E O R G I A

*Augusta Economic Development Authority*

Industrial Property Data

**Miracle Mile 98 Site**



**97.8 ACRES**

**AUGUSTA ECONOMIC DEVELOPMENT AUTHORITY**

Suite 560, 1450 Greene Street, Augusta, GA 30901

(706) 821-1321 (706) 821-1316

E-mail: [WSprouse@AugustaEDA.com](mailto:WSprouse@AugustaEDA.com) [www.AugustaEDA.com](http://www.AugustaEDA.com)

# **MIRACLE MILE 98 SITE**

**DOUG BARNARD PARKWAY AT INTERSTATE 520  
AUGUSTA, GA**

**TOTAL ACREAGE: 97.8 ACRES**

**CITY: AUGUSTA  
COUNTY: RICHMOND**

## **Zoning**

**Industrial**

**Industrial Park: x yes    no**

**Name of Industrial Park: Miracle Mile**

## **Transportation**

**Nearest Major Highway: Interstate 520**

**Nearest Commercial Airport:**

**Augusta Regional Airport**

**Distance: 1 mile**

## **Water Availability**

**Water Line Location to Site: On site**

**Line Size: 12 and 14 inch lines**

**System Capacity: 21,000,000 GPD**

**Peak Load: 15,000,000 GPD**

**Excess Capacity: 9,000,000 GPD**

## **Rail**

**At Site: Yes**

**Provided by: Norfolk Southern Corporation**

## **Sewer Availability**

**Sewer Line Location to Site: On site**

**Line Size: 48 inch**

**System Capacity: 46,000,000 GPD**

**Excess Capacity: 20,000,000 GPD**

**Municipal: Yes**

## **Additional Information:**

**Adjacent to Interstate 520 and only ten minutes from Interstate 20**

**Sub-dividable**

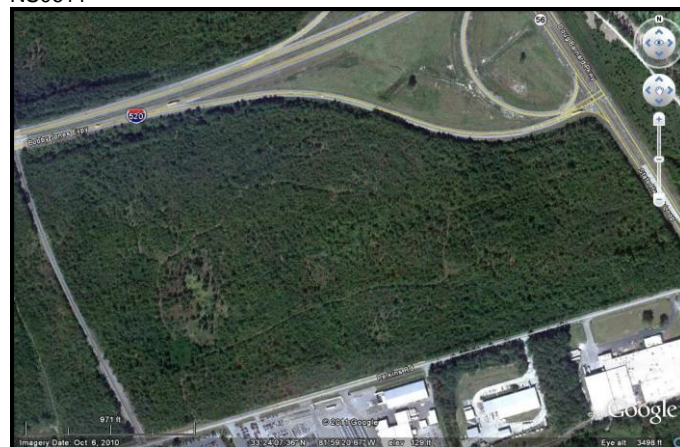
## **Power Supplier**

**Georgia Power, over 900kW**

## **Natural Gas Supplier**

**Georgia Natural Gas Company, 4 inch line**

NS0611



## **AUGUSTA ECONOMIC DEVELOPMENT AUTHORITY**

Suite 560, 1450 Greene Street, Augusta, GA 30901

(706) 821-1321

(706) 821-1316

E-mail: [WSprouse@AugustaEDA.com](mailto:WSprouse@AugustaEDA.com)

[www.AugustaEDA.com](http://www.AugustaEDA.com)