

AUGUSTA

G E O R G I A

Development Authority of Richmond County

Office/Customer Service Property Data

Wheeler Road Cheeks Site



31.49 ACRES

DEVELOPMENT AUTHORITY OF RICHMOND COUNTY

Suite 560, Historic Enterprise Mill, 1450 Greene Street, Augusta, GA 30901

(706) 821-1321 (706) 821-1316

E-mail: WSprouse@AugustaEDA.com www.AugustaEDA.com

© 2010 Development Authority of Augusta-Richmond County

WHEELER ROAD CHEEKS SITE

WHEELER ROAD AT INTERSTATE 20
3757 WHEELER ROAD
AUGUSTA, GA

TOTAL ACREAGE: 31.49 ACRES

CITY: AUGUSTA
COUNTY: RICHMOND

Zoning

Industrial
Industrial Park: ___yes Xno

Water Availability

Water Line Location to Site: On site
Line Size: 5 inch
System Capacity: 38,000,000 GPD
Peak Load: 24,000,000 GPD
Excess Capacity: 14,000,000 GPD

Sewer Availability

Sewer Line Location to Site: On site
Line Size: 6 inch
System Capacity: 42,000,000 GPD
Excess Capacity: 21,000,000 GPD
Municipal: Yes

Power Supplier

Georgia Power

Natural Gas Supplier

Atlanta Gas Light Company

Transportation

Nearest Major Highway: Interstate 20
Nearest Commercial Airport: Augusta
Regional Airport
Distance: 15 miles

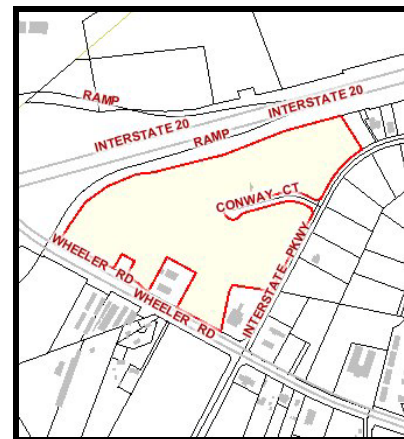
Rail

At Site: No
Provided by: n/a

Additional Information:

Property is sub dividable into smaller parcels for office buildings and professional quarters. *For short term or long term lease only.*

Date Submitted: July 2010



080410 DCheeks